

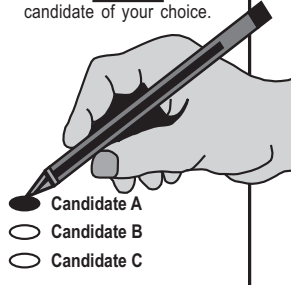


**OFFICIAL SAMPLE BALLOT**  
**CITY OF BELLEVUE**  
**NOVEMBER 8, 2005**  
**MARION COUNTY, FLORIDA**

To vote, completely fill in the oval  to the left of the candidate of your choice.



To vote, completely fill in the oval  to the left of the candidate of your choice.



<b>City of Bellevue</b>	
<b>MAYOR</b> (Vote for ONE)	
<input type="radio"/>	Tammy C. Moore
<input type="radio"/>	Ron Shelley
<hr/>	
<b>CITY COMMISSION SEAT #1</b> (Vote for ONE)	
<input type="radio"/>	Michael J. Goldman
<input type="radio"/>	Fred Kurzhals
<hr/>	
<b>END OF BALLOT</b>	

**Polling Location:** American Legion Hall  
5515 SE 109th ST

**Poll Open Times:** 7:00am to 7:00pm

This sample ballot was produced in accordance with Section 101.20, Florida Statutes.

Information provided by Dee Brown,  
Marion County Supervisor of Elections